

Detection And Measurement Of Brain Tumor Using Labview

Saranya N, Kanthimathi N, Kavithamani K, Sowndharya M, Kanimozhi A

Abstract : Brain tumors are a run of the mill development of cells in the cerebrum. It is critical to analyze these tumors as dangerous or kind as ahead of schedule as conceivable after identification. This paper introduces a noninvasive technique to separate among dangerous and favorable tumors utilizing NI Lab programming. A content in NI Vision Assistant programming is built up that recognizes tumors dependent on the measure of edema, liquids and putrefaction in the cerebrum which is reflected in the MRI Scans. Edemas and different liquids present in the cerebrum have an alternate shading and surface contrasted with the remainder of the cerebral tissue. The technique utilized depicts a procedure for location and extraction of tumor from patient's MRI check pictures of cerebrum. The calculation utilized in this work includes two phases; first is preprocessing of given MRI picture, performing division and applying morphological activities. The strategy was connected on 19 MRI sweeps and the outcomes acquired uncover that the VI content created has made 86.36% progress rate.

1. INTRODUCTION

The detection and measurement of brain tumor using LABVIEW is the best brain tumor detection method. Tumor is a strange development of tissue coming about because of uncontrolled, dynamic augmentation of cells and serving no physiological capacity; a neoplasm. A tumor can be generous, pre-dangerous or threatening or can speak to an injury with no malignant potential. Amiable neoplasm's are commonly made out of cells which look to some extent like ordinary cell type while threatening tumors are destructive developments which grow rapidly. This is developed by attacking adjacent cells and circulate all over the body through a procedure called metastasis. The cell severs and tumor enters the circulatory system, spreads to another region, contaminating extra tissue.

2. SOFTWARE REQUIREMENTS

LABVIEW is a software proposed it is utilized to build up a VI (Virtual Instrument) to distinguish the tumor LABVIEW alludes to laboratory Virtual Instrumentation designing workbench. It is a stage and improvement condition for visual programming from national instruments.

LABVIEW

The projects or subroutines in Lab View are called Virtual Instruments (VI). Every VI has three segments: a square graph, a front board and a connector board. The virtual Instrument can be either kept running as a program, with the front board filling in as UI or when dropped as hub onto square outline, the front board characterizes the sources of info and yields for a given hub through the connector board. This infers every VI can be effectively tried before being implanted as a subroutine into bigger program. Various types of Vision programming can be utilized contingent upon the application. Those are:

The Vision improvement module contains many picture preparing capacities, for example, design coordinating, surface acknowledgment, picture channels and so forth.

- NI Vision Acquisition programming
- NI Vision Development module
- NI Vision Builder for computerized investigations

Vision Assistant is the instrument for prototyping and testing picture preparing applications. Segments of vision Assistant

- **Script window** - Records a progression of picture preparing steps and settings. Contents can be kept running as single pictures or on the other hand in clump to break down gathering of pictures. They can be changed or spared.
- **Image program** – contains every one of the pictures at present stacked in vision colleague. A picture can be chosen or then again handled by double tapping on it.
- **Processing window** – refreshes the picture as you change in parameters in the parameter window until the ideal outcome is acquired and the progressions can be thought about pictures.
- Functions or parameter window-shows a rundown of picture handling capacities that are utilized to create calculations or presentations parameters that can be set for a picture handling capacity.

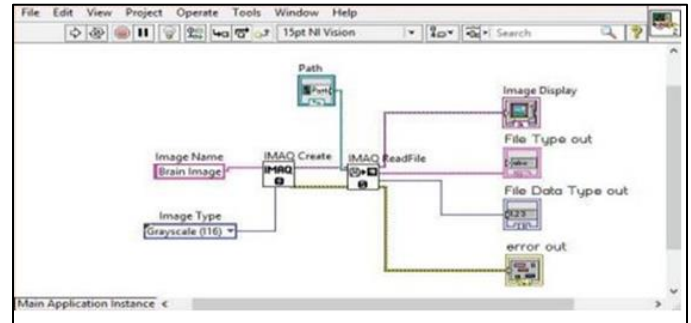
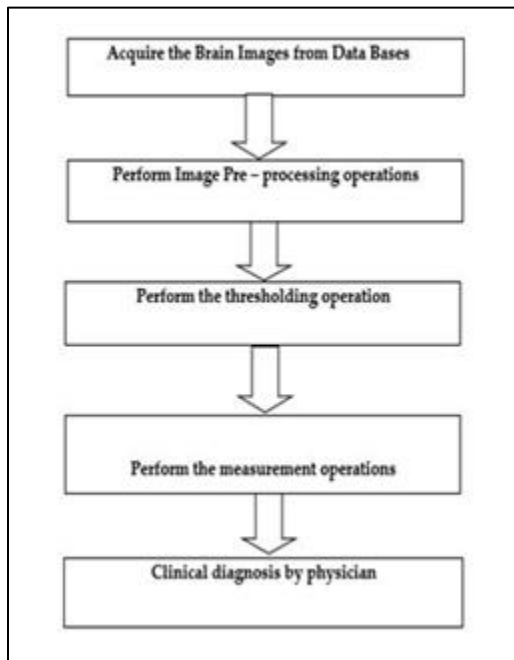
3. IMPLEMENTATIONS

The calculation utilized in this work includes two phases, first is preprocessing of given MRI picture, performing division and applying morphological activities. Arrangements of steps included are clarified underneath.

- Give MRI picture of cerebrum input
- Convert it to dim scale picture
- Apply high pass channel for commotion expulsion
- Compute limit division
- Compute morphological activity

METHODOLOGY

- Saranya N is currently working as a Assistant Professor/ECE in Bannari Amman Institute Of Technology, Sathyamangalam, Tamilnadu, India Saranyan@bitsathy.ac.in
- Kanthimathi N is currently working as a Assistant Professor level II/ECE in Bannari Amman Institute Of Technology, Sathyamangalam, Tamilnadu, India Kanthimathi@bitsathy.ac.in



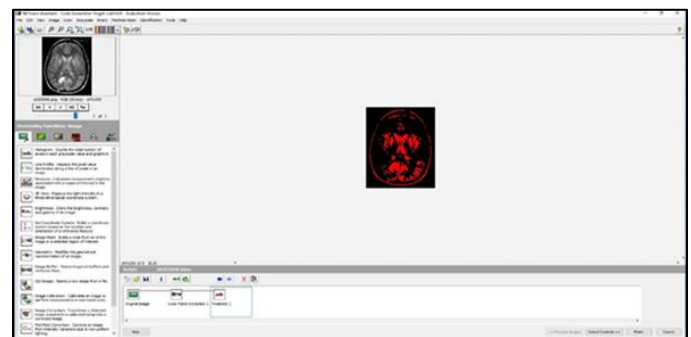
Acquire the brain image

2) PERFORM IMAGE PRE-PROCESSING OPERATION:

Preprocessing methods are utilized to show signs of improvement result for the location of the far-fetched segment from MRI and CT filter picture. The obtained picture comprises of commotion and wretched differentiation is may not be unrivaled for review. To beat commotion, and low differentiation, pre-handling of picture is fundamental to get better subtleties of improved picture.

3) PERFORM THRESHOLDING OPERATION:

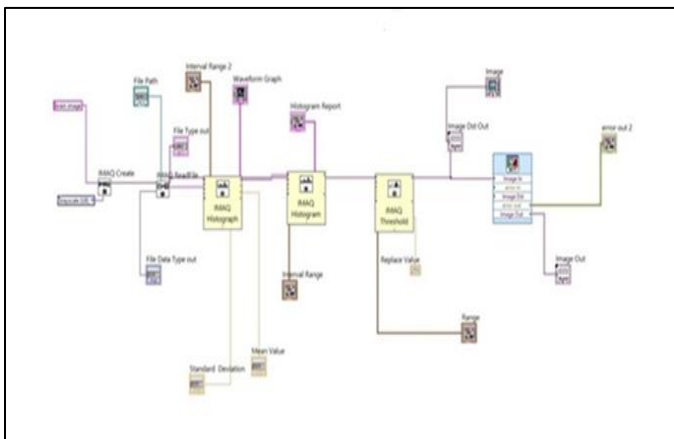
Picture thresholding is the most indispensable of picture examination. The thresholding is noteworthy just as fundamental to separate the locale in which more consideration is paying from the bacNground. The pixels having additional force an incentive than the thresholding esteem set equivalent to white yield and rest. The info dim scale picture is reestablished into a paired arrangement with the guide of thresholding. By picking an appropriate edge T, to parcel picture pixels into various locales and split articles from bacNground. Any pixel (x, y) is estimated as a component of tumor if its power is more noteworthy than or equivalent to edge esteem i.e., $f(x, y) \geq T$, other than pixel fit in the bacNground.



Threshold image

BLOCK DIAGRAM

The proposed technique to distinguish the cerebrum tumor, a picture from CT output or MRI check is obtained. Tumor for the most part has more focus than other piece of picture and content is created utilizing IMAQ (Image Acquisition) Vision and Motion Toolkits and NI (National Instruments) Vision Assistant toolbox's of LabVIEW to recognize the tumor.



Proposed model

1) ACQUIRE THE BRAIN IMAGES FROM DATABASE:

Initial phase in this procedure, is getting the picture of cerebrum that are put away in database or in picture record and showed the identical as a dim scale picture. The passages of a dark scale pictures are running from 0 to 255, where 0 speaks to finish black shading and 255 speak to unadulterated white shading. Pictures are gathered from various wellsprings of various patients and put away in database. Select one of picture from the database and play out the activity to identify the tumor zone, area and position.

4) PERFORM THE MEASUREMENT OPERATION:

In the wake of finishing the above given tasks, we can play out the estimation activities to discover the length and zone of the tumor. The estimation is essentially supreme in the SI framework, and which have seven fundamental units, for example, Nilogram, meter, and candela, second, ampere, Kelvin and mole.



(a) Measurement operation

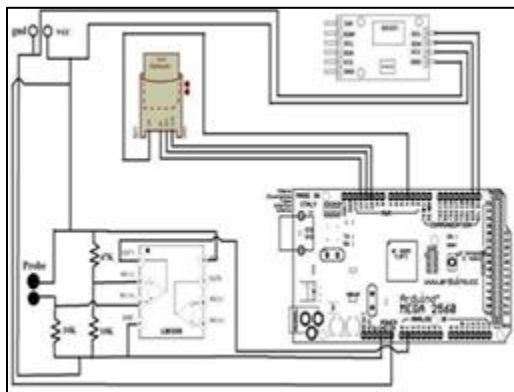


(b) Waveform

5) CLINICAL DIAGNOSIS: In the wake of sparing the estimations of the length and territory of tumor report is given to the doctor for the better treatment of the patient.

4. RESULT AND DISCUSSION

- ❖ We have taken 30 collected samples from the collected datasets, of which 10-15 samples are infected with tumor.
- ❖ The given table shows the result of images that we tested.
- ❖ This table clearly identifying whether the tumor is occurred or not.
- ❖ Here we observed:
 - a. Standard deviation (SD)
 - b. Minimum value
 - c. Maximum value
 - d. Histogram value
- ❖ If the minimum value is greater than zero, there is a chance of tumor.



5. FUTURE SCOPE

The forthcoming work, distinct methods can be used to enlarge the accuracy in merging powerful segmentation and further extraction methods with actual and medicine-based cases are done by big datasets. Automatic segmentation by the freeing physicians from the burden of manual labeling has great potential in clinical medicine

DIAGRAM	MINIMUM VALUE	MAXIMUM VALUE	MEAN VALUE	SD VARIATION VALUE	HISTOGRAM VALUE
	0	255	109.77	64.62	0
	0	253	72.95	54.45	1436
	22	255	114.45	55.36	0
	0	241	49.95	56.32	22368
	0	255	66.76	71	14026

6. CONCLUSION

The work primarily focuses on creating devoted VI created to recognize the tumors of harmful or on the other hand benign. It is seen that content has 86.36% achievement rate. Content is effective for the tumors whose bodies are unmistakably noticeable in the outputs except for certain meningiomata, which are benevolent tumors, however aim edema and certain poor-quality harmful tumors or metastasized tumors which don't create much edema. With progress of the programming and a comprehension of outputs that are reasonable for this examination, the achievement rate of the technique can be improved by a decent measure.

REFERENCES

- [1] A. Kharrat, M. B. Messaoud, N. Benamrane, A. Mohamed, "Detection of Brain Tumor in Medical Images", *International Conference on Signals, Circuits and Systems*, Vol. 26, No. 4, pp. 1-6, 2009.
- [2] DJ Brenner, EJ Hall, "Computed tomography--an increasing source of radiation exposure", *N. Engl. J. Med.*, Vol. 357, No. 22, pp. 2277-84, 2007.
- [3] M. Tubiana, "Comment on Computed Tomography and Radiation Exposure", *N.Engl.J.Med.*, Vol. 358, No. 8, pp. 852, 2008.
- [4] Dr. H. Fakhraldeen, A. S. Nawfal, "Digital Image Enhancement Using Hybrid Fuzzy Techniques Based on LabVIEW", *Al-Rafidain Engineering*, Vol.20, No. 4, 2012.
- [5] FE. Bloom, FO. Schmidt, FG. Worden, J. P. Swazey, G. Adelman, "The Neurosciences Paths of Discovery", *MIT Press*, Vol. 978, No. 8, pp. 211, 1975.